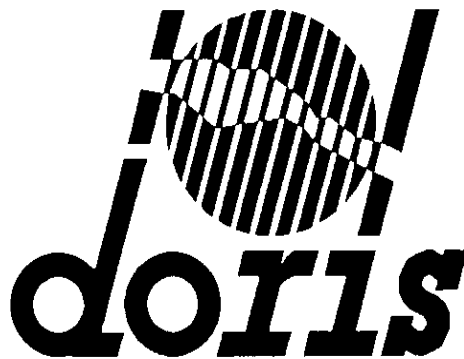


DORIS Performances



Contents

- ◆ DORIS mission
- ◆ Operations Summary & Availability
- ◆ Instrument Performances
- ◆ Open Issues
- ◆ Conclusions

(See following DORIS Products Quality presentation for MOE and POE performances)

DORIS Mission

- ◆ Main mission of DORIS, Doppler ORbitography Integrated by Satellite, is to provide to various users satellite Ephemerides
- ◆ Integrated real-time 3D navigator on-board, one block date/position/velocity/quality every 10 seconds
- ◆ Real-time time-tagging is done on-board on BCP2/4 pulses
- ◆ DORIS Doppler data are processed off-line on ground for precise orbits

Operations Summary

- ◆ 15 March - Switch-On of USO and MVR, and first Doppler measurements from DORIS beacons
- ◆ 12 April, the DORIS on-board navigator was successfully started
- ◆ Conducted activities have showed a nominal functioning of DORIS

Data Availability at Instrument Level

- ◆ DORIS on-board unavailability is mainly driven by ICU and satellite unavailability
- ◆ Only one DORIS incident, on navigator only, on 22 May just before an ICU problem
 - ◆ this incident was properly reported in the navigator TM, by orbit and datation quality indicators (HexFFFF)

Instrument Performances - Doppler data

- ◆ DORIS Doppler data residuals from currently calculated MOE orbit are 0.55-0.60 mm/s
- ◆ Quality of the Doppler data is as expected, similar quality is achieved on other DORIS instruments (SPOT5...)

Instrument Performances - Navigator

- ◆ Navigator accuracy is good and stable :
 - ◆ 20-30 cm radial RMS
 - ◆ Less than 1 meter 3D RMS
- ◆ Evaluation on 27 Aug-3 Sept 2002 compared to POE Orbit :

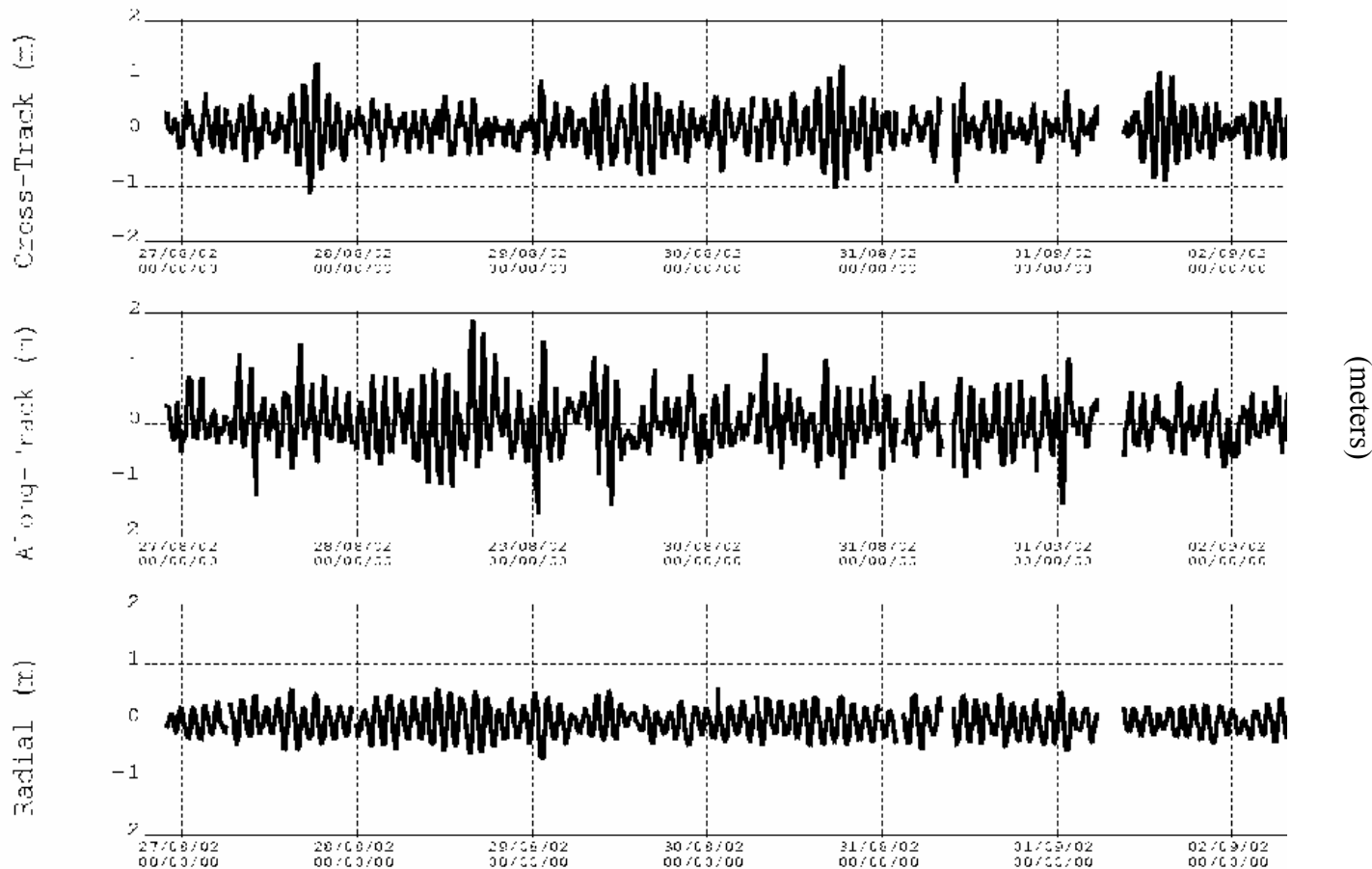
	NB POINTS	MINIMUM	MAXIMUM	MEAN	STANDARD DEV
	-----	-----	-----	-----	-----
Pos Radial	9572	-0.642743	0.595467	-0.015875	0.231335
Pos Along-Track	9572	-1.627002	1.869909	0.020870	0.421595
Pos Normal	9572	-1.116451	1.235177	0.034071	0.359720
Distance	9572	0.028018	1.947165	0.541433	0.263354
Vel Radial	9572	-0.001879	0.001694	-0.000020	0.000471
Vel Along	9572	-0.001042	0.001095	0.000004	0.000365
Vel Normal	9572	-0.001433	0.001682	0.000122	0.000470
Velocity	9572	0.000029	0.001897	0.000710	0.000297

Position in meters, Velocity in m/s

RMS radial = 23,19 cm
RMS 3D = 60.21 cm

Navigator/POE Orbit Comparison on 27 Aug-3 Sept 2002

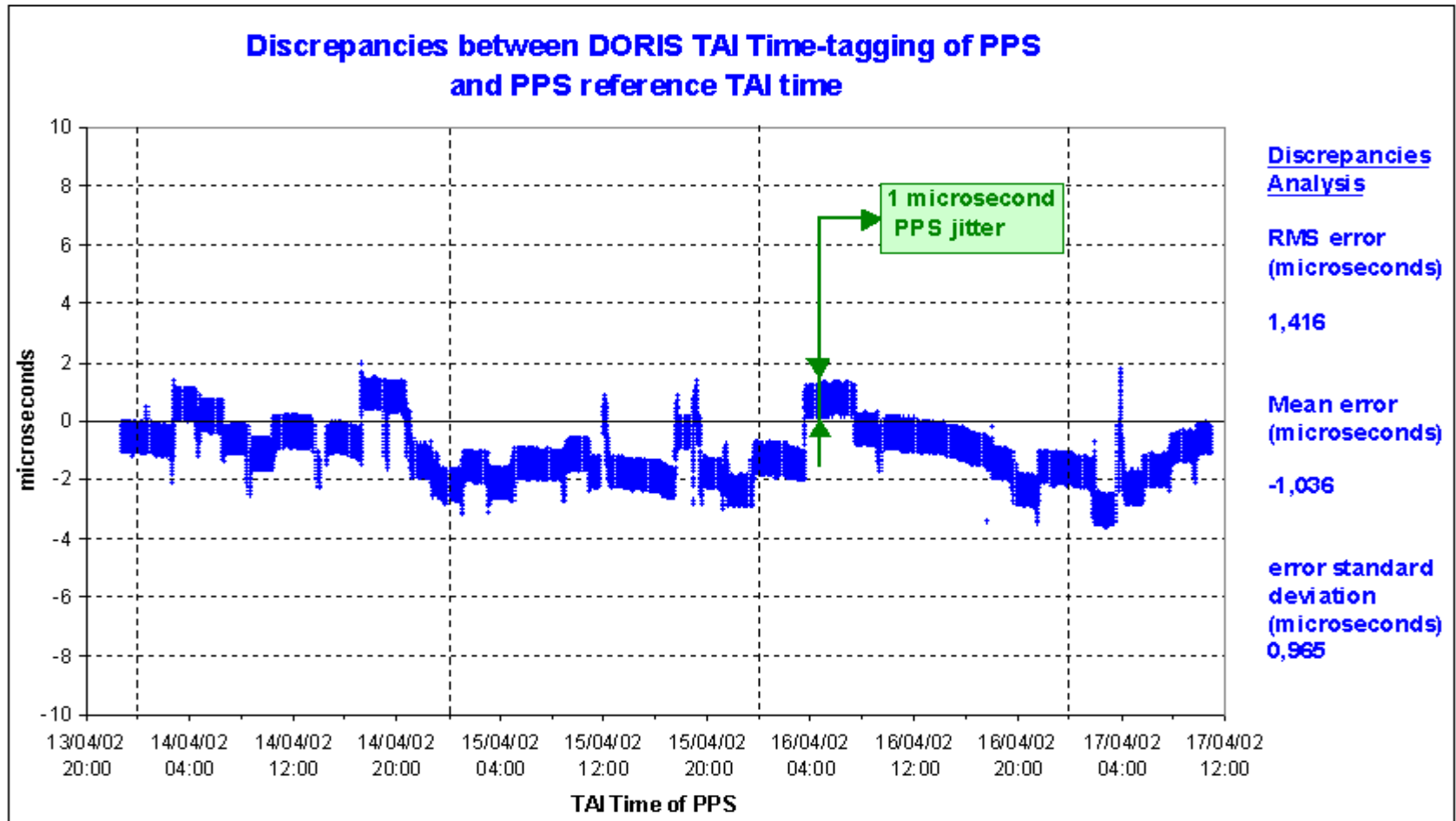
DIODE bord 27/08 - 03/09 - POE /ENVISAT-



Instrument Performances - DORIS Time-Tagging

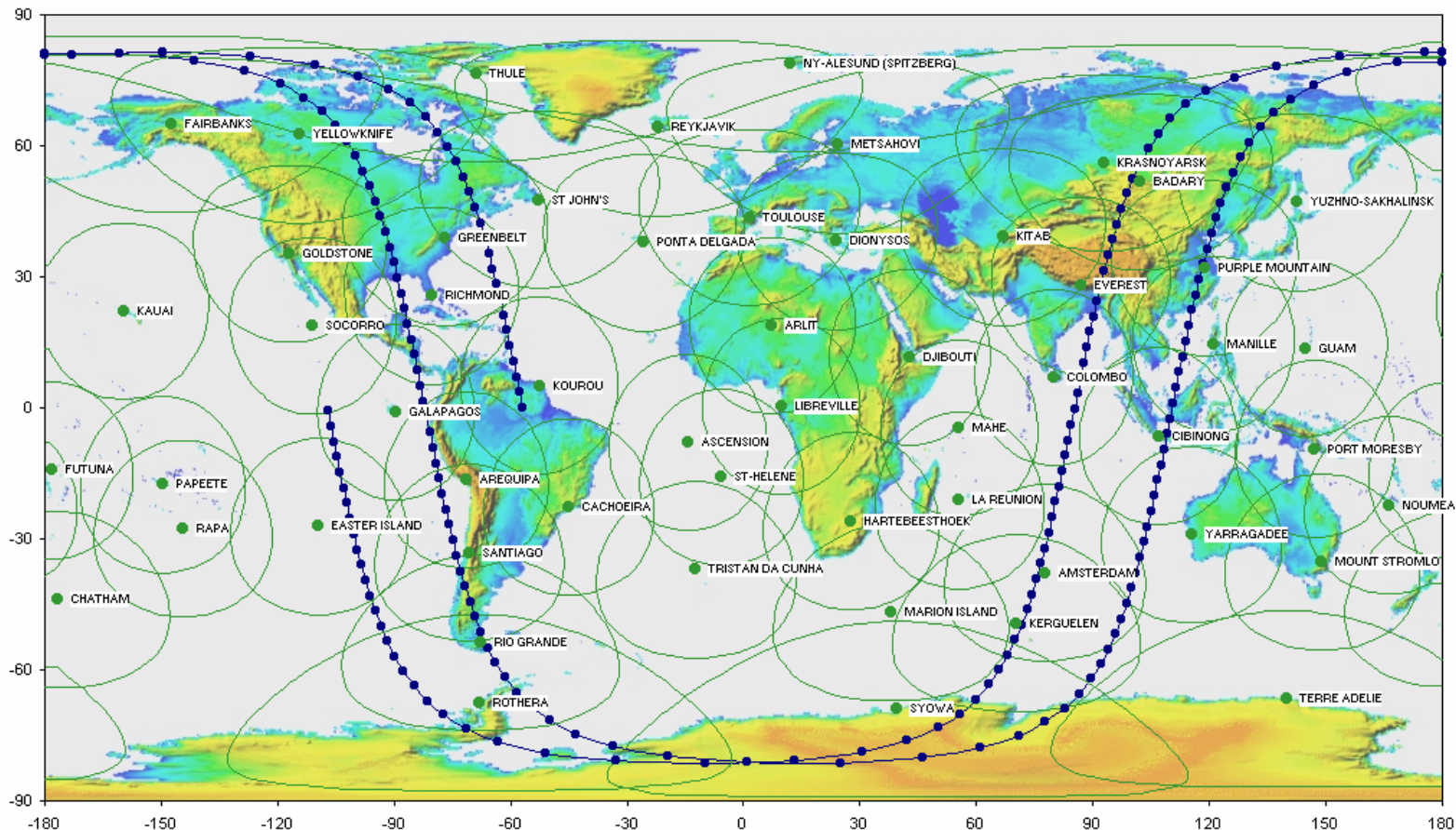
- ◆ DORIS Real-Time On-Board Datation Accuracy is OK (on BCP2 pulse following a BCP4),
 - ◆ 100 microseconds specification has been reached with the first navigator start (16 April 2002)
 - ◆ On-board transit times for DORIS updated on 13 July 2002 (74 microsecond biais corrected), no biais after.
 - ◆ Mean biais of 5 microseconds (max 10) from 8 Sept to 10 Oct 2002 due to DORIS Kourou master beacon resynchronisation (corrected on 10 Oct on-board)
 - ◆ Since 10 October 2002, DORIS/ENVISAT datation accuracy is estimated at A FEW MICROSECONDS
 - ★ accuracy of datation on DORIS/JASON is better than 2 microseconds as compared to GPS on-board

Comparison between DORIS/JASON and GPS/JASON Real-Time Datations



◆ DORIS Beacon Network performances are nominal with a very good coverage

DORIS Beacon Network Visibilities for the ENVISAT Satellite
 Minimum elevation of 8 Degrees, 2 Orbit Tracks with 1 minute Between Two Points



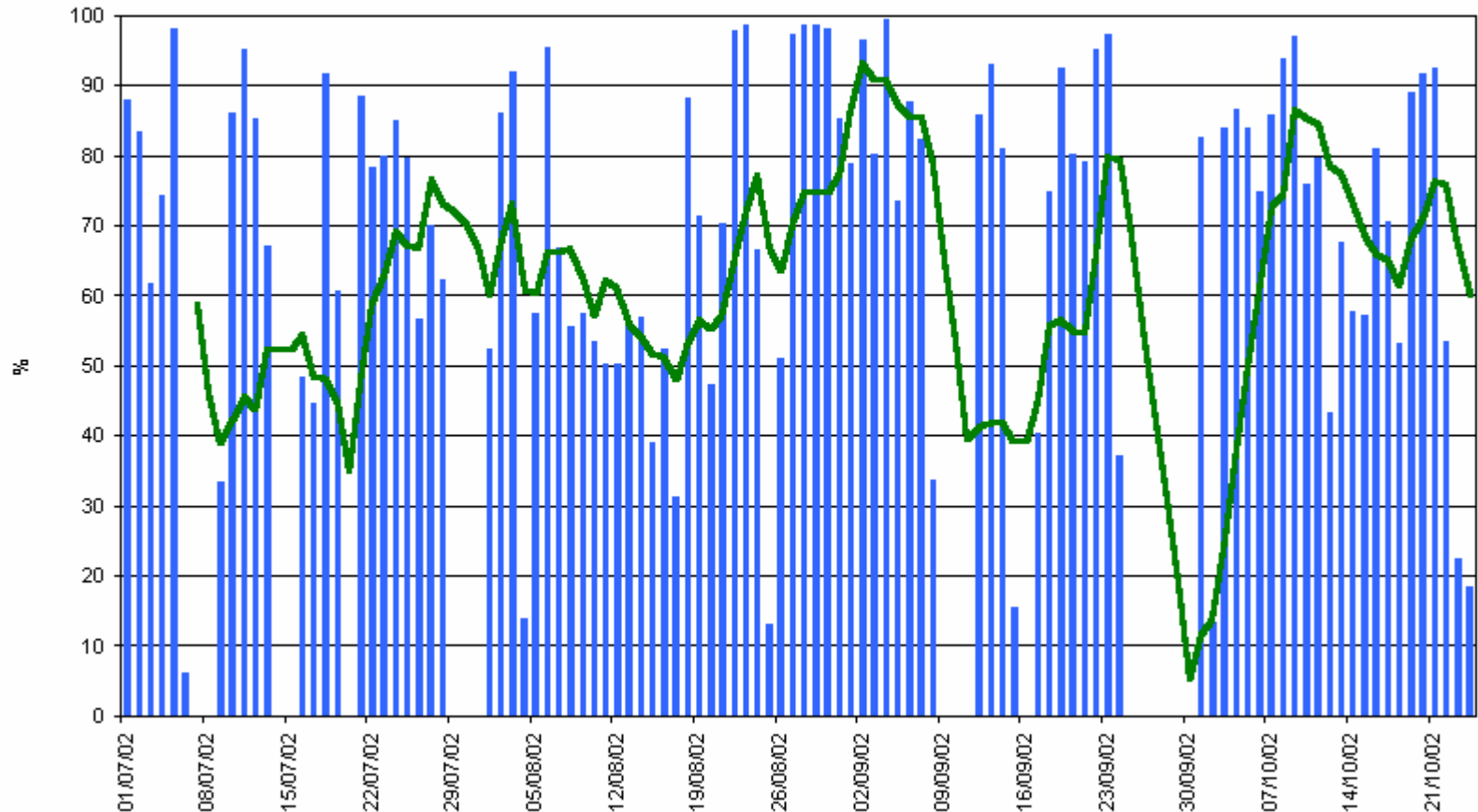
Open Issues

- ◆ New software version is under development to improve :
 - ◆ measurement performances (slightly)
 - ◆ robustness during manoeuvres
 - ◆ objective is to upload the new S/W in March-April 2003

- ◆ In October about 66% of DORIS Science data have been received at SSALTO (due to known PDS problems)
 - ◆ Still some problems to get data from PDHS-E (« blind » orbits for Kiruna), data from PDHS-K are now correctly received.

DORIS/ENVISAT Science Data Availability in July-October 2002

(with mean curve over last 7 days)



Conclusions

- ◆ Functioning and Performances of the DORIS instrument are very satisfactory
- ◆ Operations of DORIS are routine except for PDS data gaps (this has an impact on orbits)